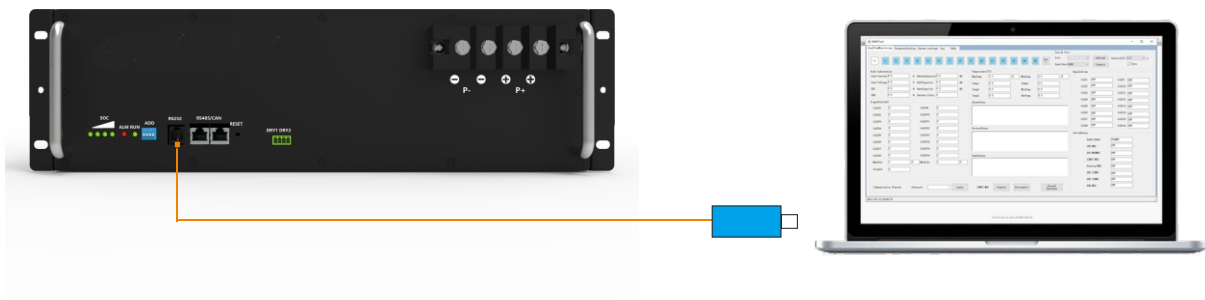


BMS PC Software Operation

1. Download BMS PC software and Unzip to a local folder.

http://120.27.63.138:8181/attach_files/rack_48v/57

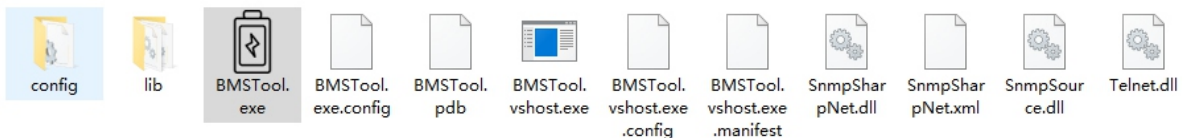
2. Connect battery RS232 port to computer by RS232 to USB equipment:



3. Check the battery ADD and make sure the ID=1



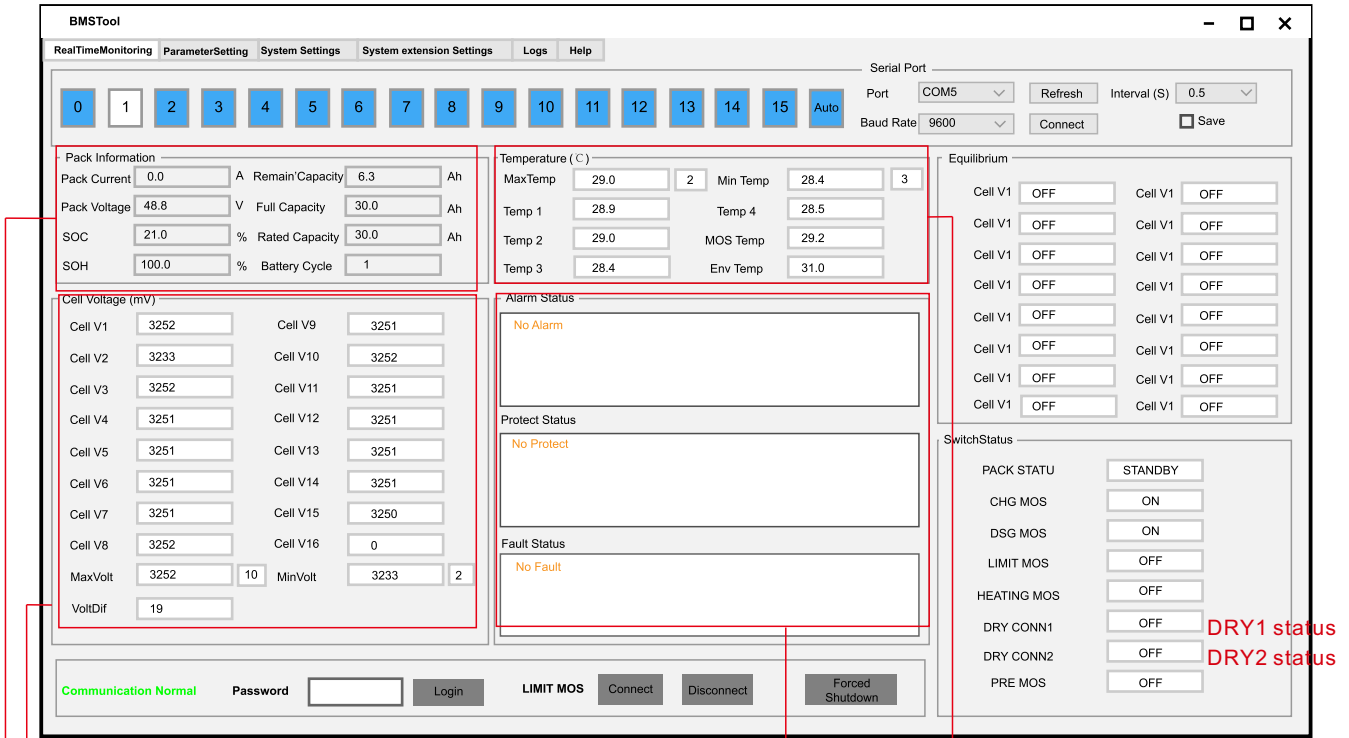
4. Double click “BMSTool.exe” to run BMS PC software.



Battery ADD

If RS232 to USB device is connected well, the serial port will be listed

3. Click “Connect”, the BMS detail information will be listed



Battery information:
Total current,
Total voltage,
SOC,
SOH,
Remain capacity,
Rated capacity,
Cycle times.

Cells information:
Cell voltage

Alarm, Protection, Fault
information

Temperature information:
Cell temperature
Environment temperature
BMS temperature (MOS)

DRY1 status
DRY2 status

Note:

DRY1 and DRY2 definition :

During charge process, Once the battery is almost charged fully or any other alarm information, the DRY1 will turn ON. Once the UPS receives this information, UPS will stop charging.

During discharge process, Once the battery is almost fully discharged or any other alarm information, the DRY2 will turn ON. Once the UPS receives this information, UPS will stop discharging.

The Parameter setting change must be carried out by a professional engineer.